

TEST REPORT

NO.: A001R140623064001-2

Date: Jun 26, 2014

Page 1 of 4

Applicant: CHAOREN TECHNOLOGY CO., LTD.

Address: XINLE INDUSTRIAL ESTATE MA'AN TOWN HUIZHOU CITY GUANGDONG PROVINCE CHINA

Report on the submitted sample said to be
Sample name: PACKING ADHESIVE TAPES

Model: /

Item/Lot No.: /

Material: /

Buyer: /

Supplier: /

Manufacturer: /

Sample received date: Jun 23, 2014

Testing period: From Jun 23, 2014 to Jun 26, 2014

Test Requested:

As specified by client, to determine the Lead(Pb), Cadmium(Cd), Mercury(Hg), Hexavalent Chromium(Cr⁶⁺), Polybrominated Biphenyls(PBBs) & Polybrominated Diphenyl Ethers(PBDEs) content in the submitted sample in accordance with Directive 2011/65/EU (RoHS).

Test Method:

(1)With reference to IEC 62321:2008 Ed 1.0 Electrotechnical products - Determination of levels of six regulated substances

(2)With reference to IEC 62321:2013 Ed 1.0 Determination of certain substances in electrotechnical products

Test Item	Pretreatment Method	Measuring Instrument	MDL
Lead	IEC 62321-5:2013 Ed 1.0 Section 7.1	ICP-OES	2 mg/kg
Cadmium	IEC 62321-5:2013 Ed 1.0 Section 7.1	ICP-OES	2 mg/kg
Mercury	IEC 62321-4:2013 Ed 1.0 Section 7.2	ICP-OES	2 mg/kg
Hexavalent Chromium	IEC 62321:2008 Ed 1.0 Annex C	UV-VIS	2 mg/kg
Polybrominated Biphenyls/ Polybrominated Diphenyl Ethers	IEC 62321:2008 Ed 1.0 Annex A	GC-MS	5 mg/kg

Conclusion:

-When tested as specified, the submitted sample complied with the requirements of Directive 2011/65/EU (RoHS).

*****FOR FURTHER DETAILS, PLEASE REFER TO THE FOLLOWING PAGE(S)*****

 Signed _____ on behalf of
 Shenzhen AOV Testing Technology Co., Ltd

 Tested by: Leif
 Li Xian Yong, Leif
 Project Leader

 Reviewed by: Rosary
 Luo Jun, Rosary
 Vice Technical Supervisor

 Approved by: Lewis
 Liu Lin Wen, Lewis
 Technical Supervisor

SHENZHEN AOV TESTING TECHNOLOGY CO.,LTD

 1F East,2-6F, Block 5, Yuantou Lane, Tanglang, Taoyuan Street, Nanshan District, Shenzhen, Guangdong, China
 Tel: +86-755-8600 8000 Fax: +86-755-8600 8282 Http://www.aovt.com Postcode: 518055

(Attention is drawn to the terms and conditions printed overleaf)


Hotline
 400 700 8600

TEST REPORT

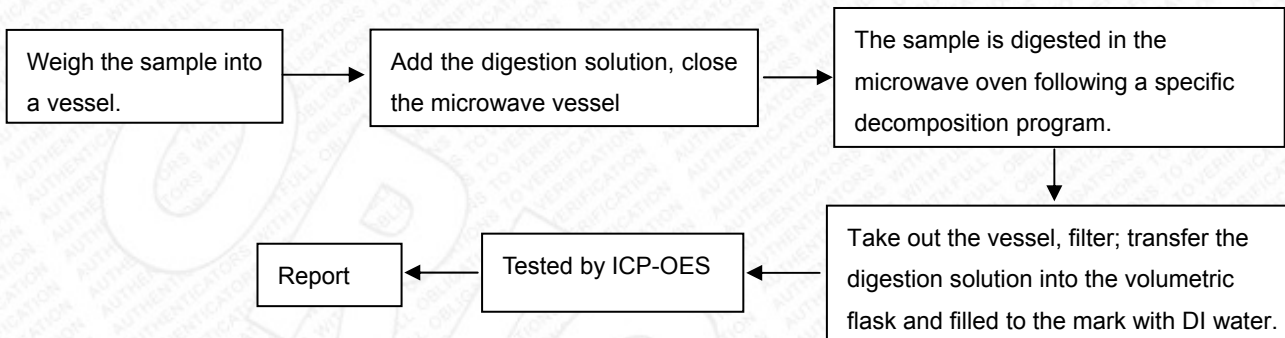
NO.: A001R140623064001-2

Date: Jun 26, 2014

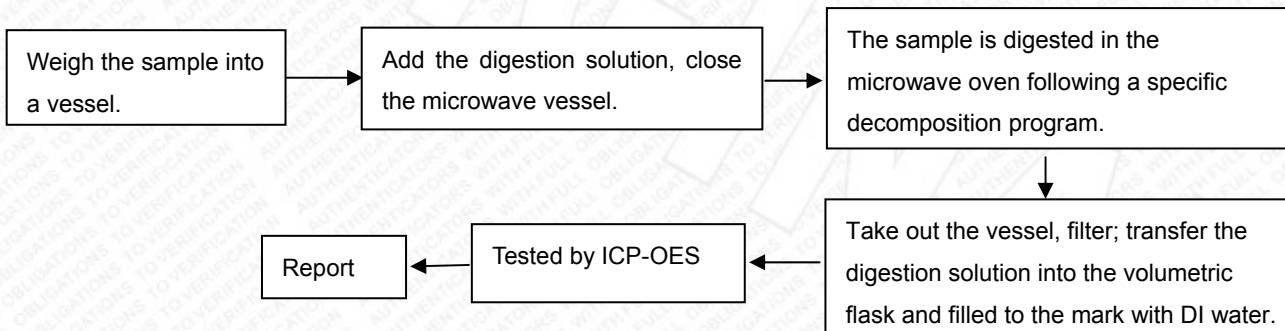
Page 2 of 4

Test Flow:

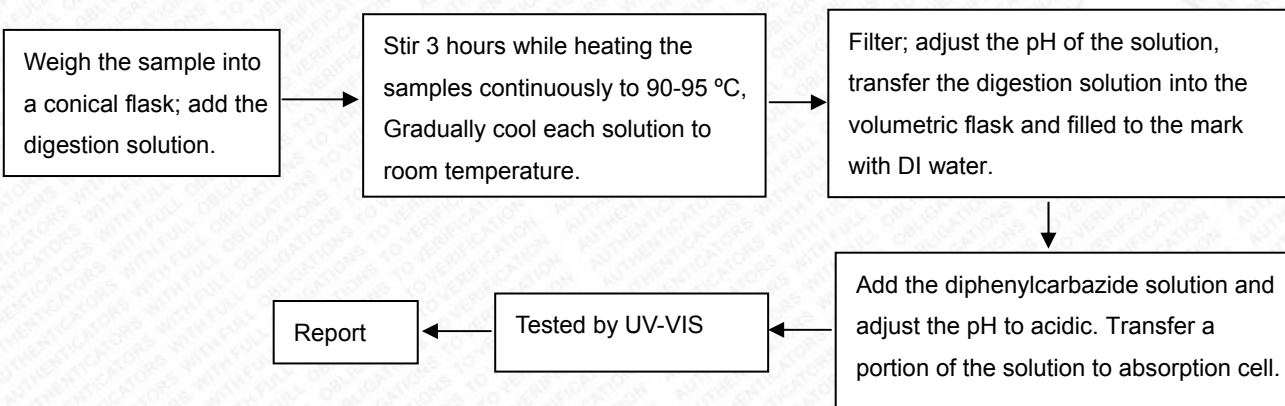
1. To Determine Lead, Cadmium Content:



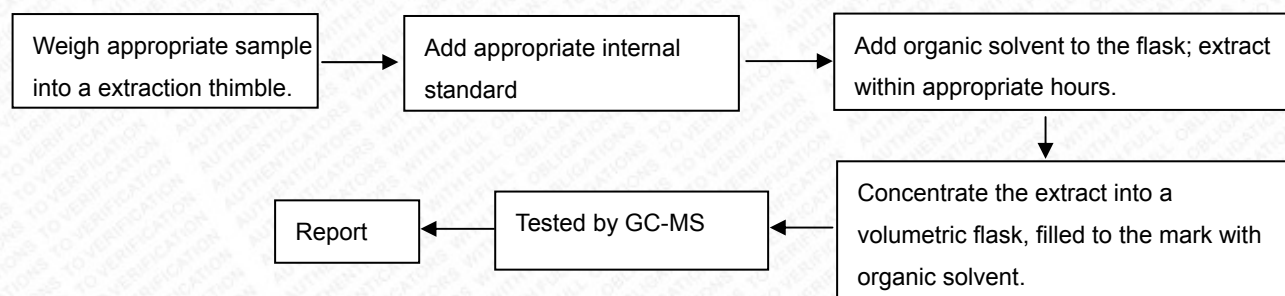
2. To Determine Mercury Content:



3. To Determine Hexavalent Chromium Content (for Polymer):



4. To Determine Polybrominated Biphenyls/Polybrominated Diphenyl Ethers Content:



TEST REPORT

NO.: A001R140623064001-2

Date: Jun 26, 2014

Page 3 of 4

Test Results:

Item	Unit	RoHS Limit	Result
			A
Lead	mg/kg	1000	N.D.
Cadmium	mg/kg	100	N.D.
Mercury	mg/kg	1000	N.D.
Hexavalent Chromium	mg/kg	1000	N.D.

Item	Unit	RoHS Limit	Result
			A
PBBs	mg/kg	1000	N.D.
MonoBB	mg/kg	/	N.D.
DiBB	mg/kg	/	N.D.
TriBB	mg/kg	/	N.D.
TetraBB	mg/kg	/	N.D.
PentaBB	mg/kg	/	N.D.
HexaBB	mg/kg	/	N.D.
HeptaBB	mg/kg	/	N.D.
OctaBB	mg/kg	/	N.D.
NonaBB	mg/kg	/	N.D.
DecaBB	mg/kg	/	N.D.
PBDEs	mg/kg	1000	N.D.
MonoBDE	mg/kg	/	N.D.
DiBDE	mg/kg	/	N.D.
TriBDE	mg/kg	/	N.D.
TetraBDE	mg/kg	/	N.D.
PentaBDE	mg/kg	/	N.D.
HexaBDE	mg/kg	/	N.D.
HeptaBDE	mg/kg	/	N.D.
OctaBDE	mg/kg	/	N.D.
NonaBDE	mg/kg	/	N.D.
DecaBDE	mg/kg	/	N.D.

Specimen Description:

A: Transparent adhesive tape

TEST REPORT

NO.: A001R140623064001-2

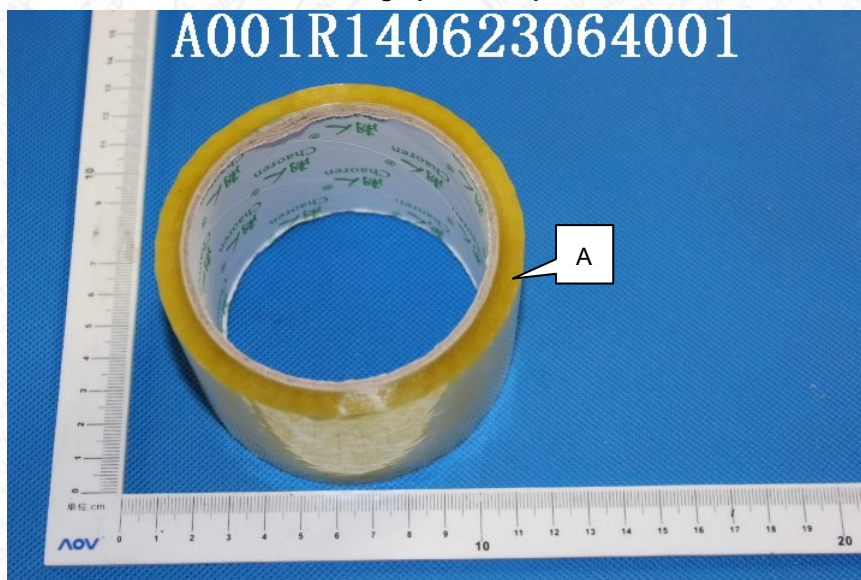
Date: Jun 26, 2014

Page 4 of 4

Note:

- Specimens, which requested to determine Cadmium, Mercury and Lead Content, have been dissolved completely.
- mg/kg=ppm
- N.D.=not detected(<MDL)
- MDL=Method Detection Limit
- “Homogeneous material” means one material of uniform composition throughout or a material, consisting of a combination of materials, that cannot be disjointed or separated into different materials by mechanical actions such as unscrewing, cutting, crushing, grinding and abrasive processes.
- Photo is included

Photograph of Sample



PACKING ADHESIVE TAPES

End of Report